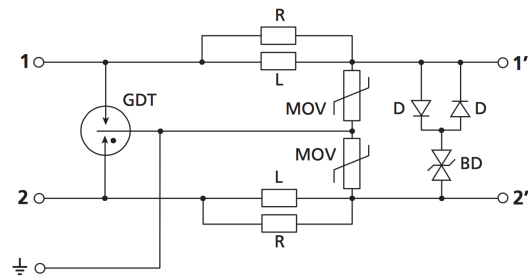
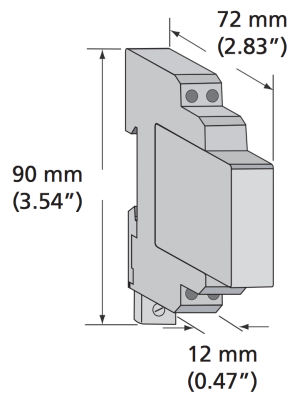


DATA/SIGNAL SPD, SINGLE PAIR, DIN MOUNT

The DD-SP Surge Protector (SPD) by Omega Power is a high grade, single pair, data protector that is designed for easy installation on 35mm DIN rail. The DD-SP is commonly used in industrial equipment such as PLCs, fire/security alarms, industrial monitoring and SCADA systems to **protect common data circuits, balanced pair signal lines**, or low voltage-low current AC or DC power supplies.

The DD-SP employs a high peak, hybrid, multi-stage clamping circuit to protect sensitive electronic equipment while minimizing line interference and insertion loss. The convenient plug in module with a separate base **facilitates service and replacement without re-wiring**.

The unique design of the DD series module allows for **easy field diagnostics. Removing the module from the base always re-establishes the circuit**, thus facilitating troubleshooting and field **diagnostics** and the immediate determination of SPD module status.



Part Number	DD5SP	DD15SP	DD30SP	DD60SP	DD110SP
Nominal System Voltage (Un)	0 - 3 VAC 0 - 5 VDC	3 - 10 VAC 5 - 15 VDC	10 - 21 VAC 15 - 30 VDC	21 - 42 VAC 30 - 60 VDC	100 - 120 VAC 60 - 154 VDC
Max Continuous Operating Voltage	5 VAC 7 VDC	12 VAC 18 VDC	23 VAC 33 VDC	45 VAC 64 VDC	150 VAC 170 VDC
Rated Load Current (IL)	2 AMPS				
Frequency	0.5 MHz	1.0 MHz	2.0 MHz	3.0 MHz	
Loop Resistance	1 Ω				
Max Discharge Current (Imax), L+L-PE	20 kA 8/20 μs				
Protection Modes	Common Differential				
Technology	Gas Discharge Tube (GDT) Metal Oxide Varistor (MOV) Silicon Avalanche Diode (SAD)				
Voltage Protection Level (Up), L-L	10 V @ 3 kA	25 V @ 3 kA	44 V @ 3 kA	85 V @ 3 kA	220 V @ 3 kA
Connection, Stranded	#18 - #12				
Enclosure Rating	IP 20 NEMA@-1				
Certification Details	UL@ 497B				
Complies With	ANSI@/IEEE@ C62.41.2-2002 Cat A, Cat B, Cat C				
Certifications	CE NOM UR	CE NOM UR	CE NOM UR	CE NOM UR	CE NOM UR